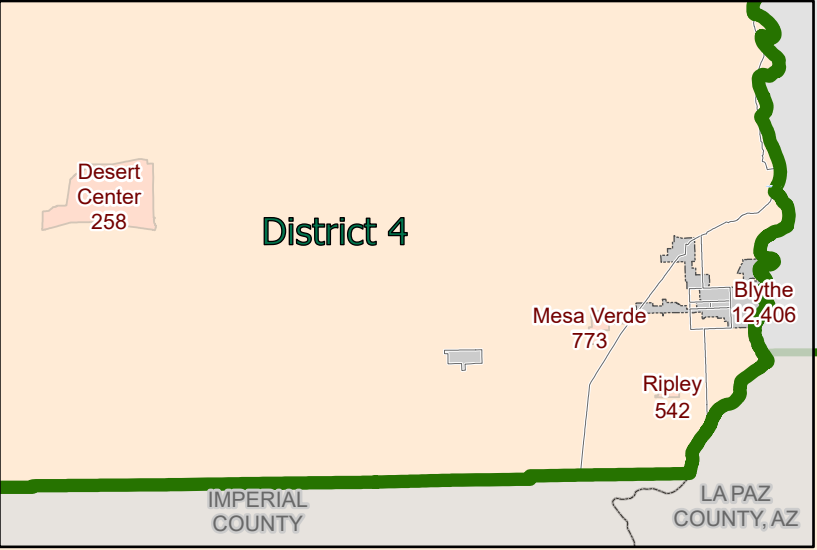
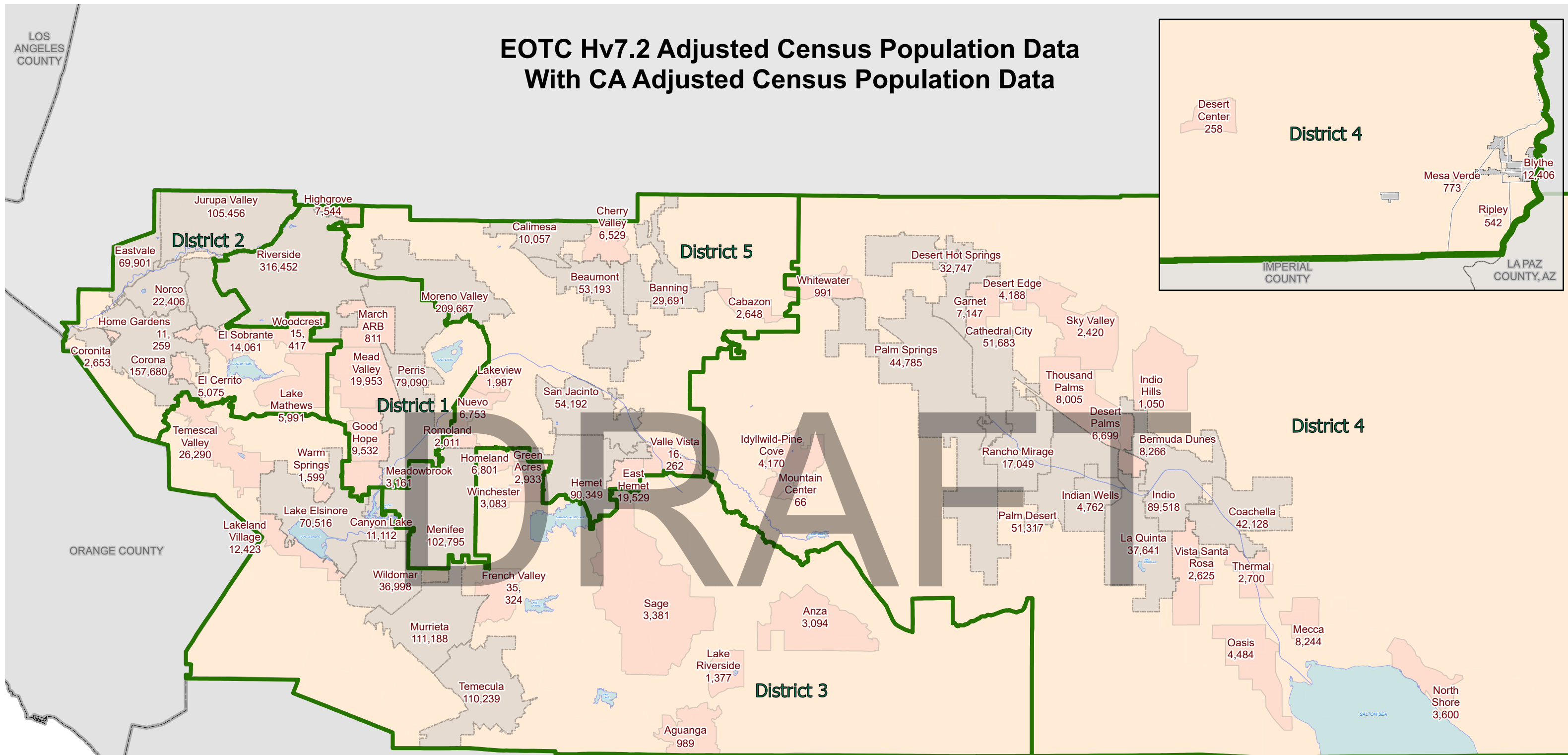
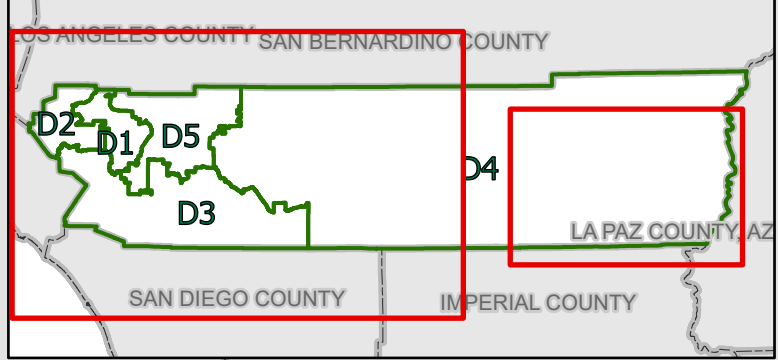


# EOTC Hv7.2 Adjusted Census Population Data With CA Adjusted Census Population Data



District	Population 2020	Target Population	Variance from 2020 Target	Change Need to Reach Target
1	490,220	483,488	1.4%	-6,732
2	487,559	483,488	0.8%	-4,071
3	484,542	483,488	0.2%	-1,054
4	464,828	483,488	-3.9%	18,660
5	490,289	483,488	1.4%	-6,801

- Cities
- Census Designated Places
- Census Tracts
- EOTC Hv7.2 Redistricting Boundary



**Riverside County  
Supervisorial District Summary**

**California Adjusted 2020 US Census Public Law File 94-171**

**Table 1. California Adjusted 2020 Census Total Population by Race/Ethnicity**

District	Total Population	Hispanic	White	Black	American Indian/ Alaskan Native	Asian	Hawaiian or Other Pacific Islander	Other Race	Two or more minority race
1	490,220	301,274	96,968	44,679	1,608	27,566	1,529	2,684	13,912
	100%	61.5%	19.8%	9.1%	0.3%	5.6%	0.3%	0.5%	2.8%
2	487,559	254,833	131,544	24,538	1,335	56,083	1,439	2,629	15,158
	100%	52.3%	27.0%	5.0%	0.3%	11.5%	0.3%	0.5%	3.1%
3	484,542	166,613	216,500	24,483	3,160	43,309	1,752	2,645	26,080
	100%	34.4%	44.7%	5.1%	0.7%	8.9%	0.4%	0.5%	5.4%
4	464,828	249,637	174,313	11,625	1,915	13,899	429	2,126	10,884
	100%	53.7%	37.5%	2.5%	0.4%	3.0%	0.1%	0.5%	2.3%
5	490,289	228,972	169,404	41,203	3,941	23,961	1,625	2,490	18,693
	100%	46.7%	34.6%	8.4%	0.8%	4.9%	0.3%	0.5%	3.8%
COUNTY TOTAL	2,417,438	1,201,329	788,729	146,528	11,959	164,818	6,774	12,574	84,727
	100%	49.7%	32.6%	6.1%	0.5%	6.8%	0.3%	0.5%	3.5%

**Table 2. California Adjusted 2020 Census Total Population by Race/Ethnicity Over the Age of 18**

District	Total Population (Over 18)	Hispanic (Over 18)	White (Over 18)	Black (Over 18)	American Indian/ Alaskan Native (Over 18)	Asian (Over 18)	Hawaiian or Other Pacific Islander (Over 18)	Other Race (Over 18)	Two or more minority race (Over 18)
1	362,327	208,529	82,228	34,262	1,301	23,488	1,158	1,838	9,523
	100%	57.6%	22.7%	9.5%	0.4%	6.5%	0.3%	0.5%	2.6%
2	365,711	179,337	108,563	19,530	1,097	44,396	1,102	1,870	9,816
	100%	49.0%	29.7%	5.3%	0.3%	12.1%	0.3%	0.5%	2.7%
3	358,606	111,808	172,331	18,752	2,329	34,449	1,341	1,795	15,801
	100%	31.2%	48.1%	5.2%	0.6%	9.6%	0.4%	0.5%	4.4%
4	366,821	173,459	161,029	9,250	1,535	11,847	315	1,488	7,898
	100%	47.3%	43.9%	2.5%	0.4%	3.2%	0.1%	0.4%	2.2%
5	369,296	156,572	143,129	31,373	2,856	19,895	1,257	1,771	12,443
	100%	42.4%	38.8%	8.5%	0.8%	5.4%	0.3%	0.5%	3.4%
COUNTY TOTAL	1,822,761	829,705	667,280	113,167	9,118	134,075	5,173	8,762	55,481
	100%	45.5%	36.6%	6.2%	0.5%	7.4%	0.3%	0.5%	3.0%

**CA Adjusted 2020 Census Difference from 2021 Target Supervisorial District Population of 483,488**

District	Number	Percent	Percent Spread (Largest - Smallest)
1	-6,732	-1.39%	
2	-4,071	-0.84%	
3	-1,054	-0.22%	
4	18,660	3.86%	
5	-6,801	-1.41%	

Source: California Statewide Database Public Law (P.L.) 94-171 and US Census Bureau Website, enacted by Congress in December 1975, requires the Census Bureau to provide states the opportunity to identify the small area geography for which they need data in order to conduct legislative redistricting.

For more information about Public Law (P.L.) 94-171: <https://www.census.gov/programs-surveys/decennial-census/about/rdo/summary-files.html>

Riverside County  
Supervisory District Summary

**California Adjusted Citizen Voting Age Population 2020 US Special Tabulation From the 2015-2019 5-Year American Community Survey (ACS)**

**Table 3. Citizen Population - (CVAP) 2015-2019 5-year American Community Survey (ACS)**

District	Total	Not Hispanic or Latino: American Indian or Alaska Native Alone	Not Hispanic or Latino: American Black or African American Alone	Not Hispanic or Latino: Asian Alone	Not Hispanic or Latino: American Black or African American Alone	Not Hispanic or Latino: Native Hawaiian or Other Pacific Islander Alone	Not Hispanic or Latino: White Alone	Not Hispanic or Latino: American Indian or Alaska Native and White	Not Hispanic or Latino: Asian and White	Not Hispanic or Latino: Black or African American and White	Not Hispanic or Latino: American Indian or Alaska Native and Black or African American	Not Hispanic or Latino: Remainder of Two or More Race Responses	Hispanic or Latino
1	434,328	188,386	1,156	22,391	47,736	810	107,279	837	3,280	2,512	207	1,622	245,793
	100%	43.4%	0.3%	5.2%	11.0%	0.2%	24.7%	0.2%	0.8%	0.6%	0.0%	0.4%	56.6%
2	441,632	225,375	862	41,028	23,849	1,083	147,583	1,870	4,086	2,248	121	2,328	216,449
	100%	51.0%	0.2%	9.3%	5.4%	0.2%	33.4%	0.4%	0.9%	0.5%	0.0%	0.5%	49.0%
3	454,731	305,091	2,220	31,568	23,942	2,422	226,244	2,495	7,381	3,721	683	4,293	149,747
	100%	67.1%	0.5%	6.9%	5.3%	0.5%	49.8%	0.5%	1.6%	0.8%	0.2%	0.9%	32.9%
4	398,977	214,243	1,372	10,760	13,763	293	181,919	1,309	1,749	1,455	87	1,005	184,516
	100%	53.7%	0.3%	2.7%	3.4%	0.1%	45.6%	0.3%	0.4%	0.4%	0.0%	0.3%	46.2%
5	426,632	242,692	4,569	17,159	36,669	1,153	172,600	2,142	2,663	2,953	170	2,095	184,051
	100%	56.9%	1.1%	4.0%	8.6%	0.3%	40.5%	0.5%	0.6%	0.7%	0.0%	0.5%	43.1%
COUNTY TOTAL	2,156,300	1,175,787	10,179	122,906	145,959	5,761	835,625	8,653	19,159	12,889	1,268	11,343	980,556
	100%	54.5%	0.5%	5.7%	6.8%	0.3%	38.8%	0.4%	0.9%	0.6%	0.1%	0.5%	45.5%

**Table 4. Citizen Voting Age Population - (CVAP) 2015-2019 5-year American Community Survey (ACS)**

District	CVAP Total	CVAP Not Hispanic or Latino: American Indian or Alaska Native Alone	CVAP Not Hispanic or Latino: American Black or African American Alone	CVAP Not Hispanic or Latino: Asian Alone	CVAP Not Hispanic or Latino: American Black or African American Alone	CVAP Not Hispanic or Latino: Native Hawaiian or Other Pacific Islander Alone	CVAP Not Hispanic or Latino: White Alone	CVAP Not Hispanic or Latino: American Indian or Alaska Native and White	CVAP Not Hispanic or Latino: Asian and White	CVAP Not Hispanic or Latino: Black or African American and White	CVAP Not Hispanic or Latino: American Indian or Alaska Native and Black or African American	CVAP Not Hispanic or Latino: Remainder of Two or More Race Responses	CVAP Hispanic or Latino
1	305,011	151,375	953	18,711	36,313	662	89,166	606	1,957	1,275	192	944	153,462
	100%	49.6%	0.3%	6.1%	11.9%	0.2%	29.2%	0.2%	0.6%	0.4%	0.1%	0.3%	50.3%
2	315,099	178,432	739	31,269	18,863	975	120,411	1,587	1,808	1,085	103	1,324	136,768
	100%	56.6%	0.2%	9.9%	6.0%	0.3%	38.2%	0.5%	0.6%	0.3%	0.0%	0.4%	43.4%
3	317,715	230,325	1,709	24,462	18,472	1,846	174,636	1,656	3,124	1,543	458	2,236	87,507
	100%	72.5%	0.5%	7.7%	5.8%	0.6%	55.0%	0.5%	1.0%	0.5%	0.1%	0.7%	27.5%
4	310,514	190,218	1,053	8,635	10,653	198	165,669	1,169	722	689	72	778	120,234
	100%	61.3%	0.3%	2.8%	3.4%	0.1%	53.4%	0.4%	0.2%	0.2%	0.0%	0.3%	38.7%
5	308,359	194,132	3,296	13,325	27,458	720	142,855	1,588	1,448	1,575	139	1,165	114,272
	100%	63.0%	1.1%	4.3%	8.9%	0.2%	46.3%	0.5%	0.5%	0.5%	0.0%	0.4%	37.1%
COUNTY TOTAL	1,556,698	944,482	7,750	96,402	111,759	4,401	692,737	6,606	9,059	6,167	964	6,447	612,243
	100%	60.7%	0.5%	6.2%	7.2%	0.3%	44.5%	0.4%	0.6%	0.4%	0.1%	0.4%	39.3%

**Riverside County  
Supervisorial District Summary**

**Table 5. DOJ Tabulation: Citizen Population (CVAP) 2015-2019 5-year American Community Survey (ACS)**

District	Total	Not Hispanic or Latino:		
		American Indian or Alaska Native	Black or African American	Not Hispanic or Latino: Asian
1	77,912	1,993	50,248	25,671
	100%	2.6%	64.5%	32.9%
2	73,943	2,732	26,097	45,114
	100%	3.7%	35.3%	61.0%
3	71,327	4,715	27,663	38,949
	100%	6.6%	38.8%	54.6%
4	30,408	2,681	15,218	12,509
	100%	8.8%	50.0%	41.1%
5	66,155	6,711	39,622	19,822
	100%	10.1%	59.9%	30.0%
<b>COUNTY TOTAL</b>	<b>319,745</b>	<b>18,832</b>	<b>158,848</b>	<b>142,065</b>
	100%	5.9%	49.7%	44.4%

**Table 6. DOJ Tabulation: Citizen Voting Age Population (CVAP) 2015-2019 5-year American Community Survey (ACS)**

District	DOJ CVAP Total	DOJ CVAP Not Hispanic or Latino:		
		American Indian or Alaska Native	Black or African American	DOJ CVAP Not Hispanic or Latino: Asian
1	59,815	1,559	37,588	20,668
	100%	2.0%	48.2%	26.5%
2	55,351	2,326	19,948	33,077
	100%	3.1%	27.0%	44.7%
3	50,966	3,365	20,015	27,586
	100%	4.7%	28.1%	38.7%
4	22,921	2,222	11,342	9,357
	100%	7.3%	37.3%	30.8%
5	48,690	4,884	29,033	14,773
	100%	7.4%	43.9%	22.3%
<b>COUNTY TOTAL</b>	<b>237,743</b>	<b>14,356</b>	<b>117,926</b>	<b>105,461</b>
	100%	4.5%	36.9%	33.0%

Source: Statewide Database 2015-2019 Citizen Voting Age Population, adjusted to reflect reallocated incarcerated persons, on 2020 Census Blocks. The original data source for the Citizen Voting Age Population (CVAP) is the American Community Survey (ACS). The ACS is an ongoing survey by the U.S. Census Bureau sent to approximately 250,000 households each month. The ACS estimates used to develop these data were collected from January 1, 2015 to December 31, 2019 utilizing the 2010 Census block groups, which were disaggregated to the 2020 Census blocks by the Statewide Database.

Because this is a special tabulation of data and not part of the standard data products shown on the Census Bureau's data.census.gov website, these estimates are rounded. Therefore, individual categories may not exactly add to the total.

For example, the sum of each of the race groups for non-Hispanics may not be the same as the estimate given for non-Hispanics. These estimates will

[For more information about CVAP products, visit https://www.census.gov/programs-surveys/decennial-census/about/voting-rights/cvap.html](https://www.census.gov/programs-surveys/decennial-census/about/voting-rights/cvap.html)  
[https://www2.census.gov/programs-surveys/decennial/rdo/technical-documentation/special-tabulation/CVAP\\_2015-2019\\_ACS\\_documentation.pdf](https://www2.census.gov/programs-surveys/decennial/rdo/technical-documentation/special-tabulation/CVAP_2015-2019_ACS_documentation.pdf)