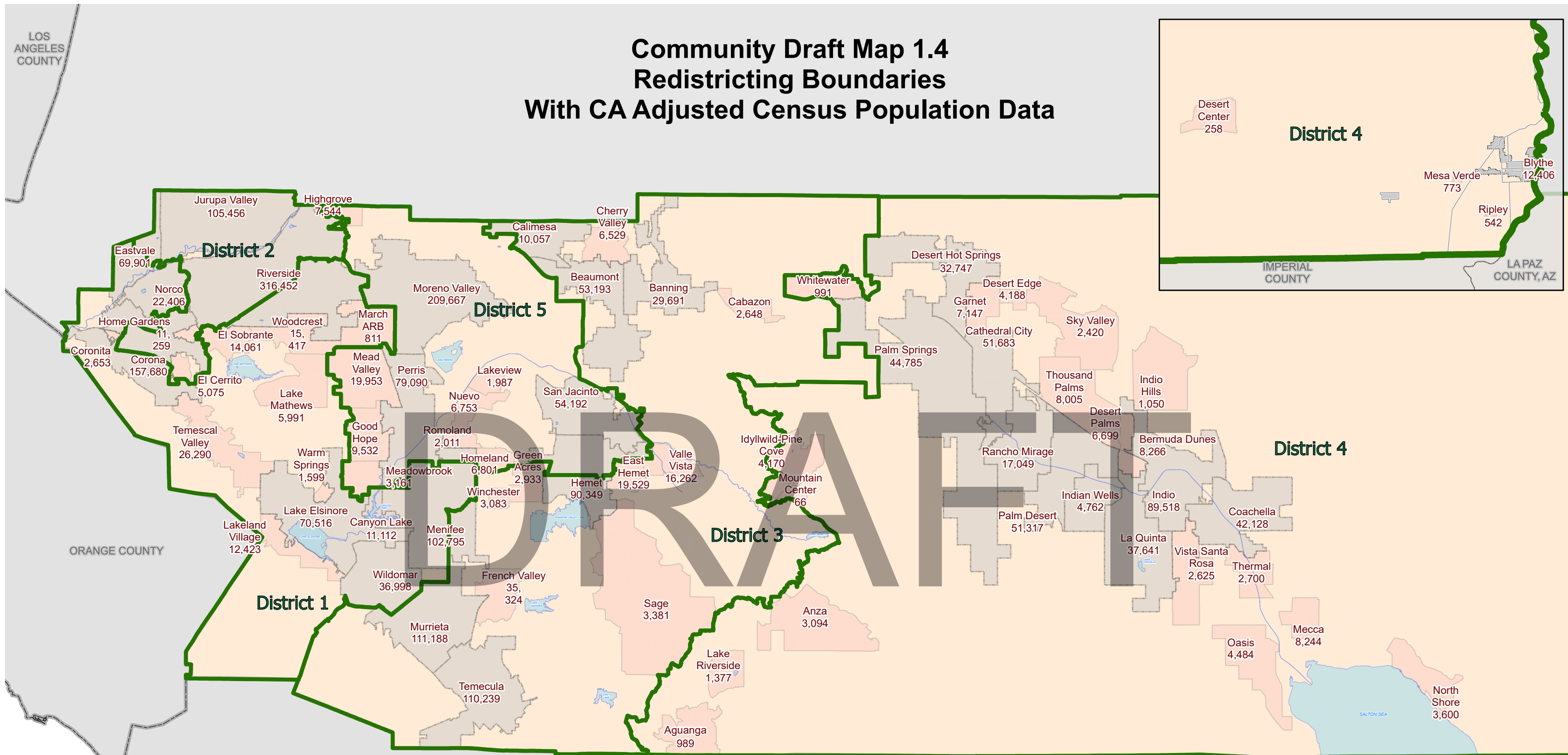


# Community Draft Map 1.4 Redistricting Boundaries With CA Adjusted Census Population Data



**Riverside County  
 Supervisorial District Summary**

**California Adjusted 2020 US Census Public Law File 94-171**

**Table 1. California Adjusted 2020 Census Total Population by Race/Ethnicity**

| District            | Total Population | Hispanic     | White        | Black        | American Indian/ Alaskan Native | Asian        | Hawaiian or Other Pacific Islander | Other Race  | Two or more minority race |
|---------------------|------------------|--------------|--------------|--------------|---------------------------------|--------------|------------------------------------|-------------|---------------------------|
| <b>1</b>            | 483,112          | 181,293      | 195,626      | 27,938       | 1,563                           | 51,454       | 1,483                              | 2,636       | 21,119                    |
|                     | <b>100%</b>      | <b>37.5%</b> | <b>40.5%</b> | <b>5.8%</b>  | <b>0.3%</b>                     | <b>10.7%</b> | <b>0.3%</b>                        | <b>0.5%</b> | <b>4.4%</b>               |
| <b>2</b>            | 483,099          | 297,795      | 105,572      | 25,370       | 1,657                           | 35,955       | 1,395                              | 2,585       | 12,770                    |
|                     | <b>100%</b>      | <b>61.6%</b> | <b>21.9%</b> | <b>5.3%</b>  | <b>0.3%</b>                     | <b>7.4%</b>  | <b>0.3%</b>                        | <b>0.5%</b> | <b>2.6%</b>               |
| <b>3</b>            | 493,824          | 166,645      | 221,742      | 28,056       | 4,495                           | 42,847       | 1,633                              | 2,599       | 25,807                    |
|                     | <b>100%</b>      | <b>33.7%</b> | <b>44.9%</b> | <b>5.7%</b>  | <b>0.9%</b>                     | <b>8.7%</b>  | <b>0.3%</b>                        | <b>0.5%</b> | <b>5.2%</b>               |
| <b>4</b>            | 473,450          | 251,663      | 179,372      | 11,706       | 2,380                           | 14,462       | 435                                | 2,177       | 11,255                    |
|                     | <b>100%</b>      | <b>53.2%</b> | <b>37.9%</b> | <b>2.5%</b>  | <b>0.5%</b>                     | <b>3.1%</b>  | <b>0.1%</b>                        | <b>0.5%</b> | <b>2.4%</b>               |
| <b>5</b>            | 483,953          | 303,933      | 86,417       | 53,458       | 1,864                           | 20,100       | 1,828                              | 2,577       | 13,776                    |
|                     | <b>100%</b>      | <b>62.8%</b> | <b>17.9%</b> | <b>11.0%</b> | <b>0.4%</b>                     | <b>4.2%</b>  | <b>0.4%</b>                        | <b>0.5%</b> | <b>2.8%</b>               |
| <b>COUNTY TOTAL</b> | 2,417,438        | 1,201,329    | 788,729      | 146,528      | 11,959                          | 164,818      | 6,774                              | 12,574      | 84,727                    |
|                     | <b>100%</b>      | <b>49.7%</b> | <b>32.6%</b> | <b>6.1%</b>  | <b>0.5%</b>                     | <b>6.8%</b>  | <b>0.3%</b>                        | <b>0.5%</b> | <b>3.5%</b>               |

**Table 2. California Adjusted 2020 Census Total Population by Race/Ethnicity Over the Age of 18**

| District            | Total Population (Over 18) | Hispanic (Over 18) | White (Over 18) | Black (Over 18) | American Indian/ Alaskan Native (Over 18) | Asian (Over 18) | Hawaiian or Other Pacific Islander (Over 18) | Other Race (Over 18) | Two or more minority race (Over 18) |
|---------------------|----------------------------|--------------------|-----------------|-----------------|---|-----------------|--|----------------------|-------------------------------------|
| <b>1</b>            | 366,511                    | 125,097            | 160,069         | 22,202          | 1,241                                     | 41,141          | 1,173  | 1,882                | 13,706                              |
|                     | <b>100%</b>                | <b>34.1%</b>       | <b>43.7%</b>    | <b>6.1%</b>     | <b>0.3%</b>                               | <b>11.2%</b>    | <b>0.3%</b>                                  | <b>0.5%</b>          | <b>3.7%</b>                         |
| <b>2</b>            | 364,212                    | 210,442            | 90,542          | 20,443          | 1,405                                     | 29,712          | 1,039  | 1,830                | 8,799                               |
|                     | <b>100%</b>                | <b>57.8%</b>       | <b>24.9%</b>    | <b>5.6%</b>     | <b>0.4%</b>                               | <b>8.2%</b>     | <b>0.3%</b>                                  | <b>0.5%</b>          | <b>2.4%</b>                         |
| <b>3</b>            | 367,101                    | 111,896            | 177,884         | 21,383          | 3,222                                     | 34,039          | 1,271  | 1,807                | 15,599                              |
|                     | <b>100%</b>                | <b>30.5%</b>       | <b>48.5%</b>    | <b>5.8%</b>     | <b>0.9%</b>                               | <b>9.3%</b>     | <b>0.3%</b>                                  | <b>0.5%</b>          | <b>4.2%</b>                         |
| <b>4</b>            | 374,003                    | 174,949            | 165,515         | 9,323           | 1,867                                     | 12,325          | 318  | 1,531                | 8,175                               |
|                     | <b>100%</b>                | <b>46.8%</b>       | <b>44.3%</b>    | <b>2.5%</b>     | <b>0.5%</b>                               | <b>3.3%</b>     | <b>0.1%</b>                                  | <b>0.4%</b>          | <b>2.2%</b>                         |
| <b>5</b>            | 350,934                    | 207,321            | 73,270          | 39,816          | 1,383                                     | 16,858          | 1,372  | 1,712                | 9,202                               |
|                     | <b>100%</b>                | <b>59.1%</b>       | <b>20.9%</b>    | <b>11.3%</b>    | <b>0.4%</b>                               | <b>4.8%</b>     | <b>0.4%</b>                                  | <b>0.5%</b>          | <b>2.6%</b>                         |
| <b>COUNTY TOTAL</b> | 1,822,761                  | 829,705            | 667,280         | 113,167         | 9,118                                     | 134,075         | 5,173  | 8,762                | 55,481                              |
|                     | <b>100%</b>                | <b>45.5%</b>       | <b>36.6%</b>    | <b>6.2%</b>     | <b>0.5%</b>                               | <b>7.4%</b>     | <b>0.3%</b>                                  | <b>0.5%</b>          | <b>3.0%</b>                         |

**CA Adjusted 2020 Census Difference from 2021 Target Supervisorial District Population of 483,488**

| District | Number  | Percent | Percent Spread (Largest - Smallest) |
|----------|---------|---------|-------------------------------------|
| <b>1</b> | 376     | 0.08%   |                                     |
| <b>2</b> | 389     | 0.08%   |                                     |
| <b>3</b> | -10,336 | -2.14%  |                                     |
| <b>4</b> | 10,038  | 2.08%   |                                     |
| <b>5</b> | -465    | -0.10%  |                                     |

Source: California Statewide Database Public Law (P.L.) 94-171 and US Census Bureau Website, enacted by Congress in December 1975, requires the Census Bureau to provide states the opportunity to identify the small area geography for which they need data in order to conduct legislative redistricting.

For more information about Public Law (P.L.) 94-171: <https://www.census.gov/programs-surveys/decennial-census/about/rdo/summary-files.html>

Riverside County  
 Supervisorial District Summary

California Adjusted Citizen Voting Age Population 2020 US Special Tabulation From the 2015-2019 5-Year American Community Survey (ACS)

Table 3. Citizen Population - (CVAP) 2015-2019 5-year American Community Survey (ACS)

| District     | Total     | Not Hispanic or Latino | Not Hispanic or Latino: American Indian or Alaska Native Alone | Not Hispanic or Latino: Asian Alone | Not Hispanic or Latino: Black or African American Alone | Not Hispanic or Latino: Other Pacific Islander Alone | Not Hispanic or Latino: White Alone | Not Hispanic or Latino: American Indian or Alaska Native and White | Not Hispanic or Latino: Asian and White | Not Hispanic or Latino: Black or African American and White | Not Hispanic or Latino: American Indian or Alaska Native and Black or African American | Not Hispanic or Latino: Remainder of Two or More Race Responses | Hispanic or Latino |
|--------------|-----------|------------------------|--|-------------------------------------|---|--|-------------------------------------|--|---|---|--|---|--------------------|
| 1            | 445,920   | 287,906                | 1,444  | 37,957                              | 26,897  | 1,162  | 206,014                             | 2,347  | 5,770                                   | 2,899   | 245  | 2,713   | 158,042            |
|              | 100%      | 64.6%                  | 0.3%   | 8.5%                                | 6.0%  | 0.3%   | 46.2%                               | 0.5%   | 1.3%                                    | 0.7%  | 0.1%   | 0.6%  | 35.4%              |
| 2            | 427,556   | 179,830                | 1,184  | 27,150                              | 24,290  | 785  | 117,712                             | 1,195  | 3,122                                   | 1,946   | 131  | 2,053   | 247,996            |
|              | 100%      | 42.1%                  | 0.3%   | 6.4%                                | 5.7%  | 0.2%   | 27.5%                               | 0.3%   | 0.7%                                    | 0.5%  | 0.0%   | 0.5%  | 58.0%              |
| 3            | 464,515   | 312,639                | 4,640  | 31,049                              | 27,167  | 2,557  | 228,637                             | 2,624  | 6,860                                   | 3,781   | 630  | 4,174   | 152,064            |
|              | 100%      | 67.3%                  | 1.0%   | 6.7%                                | 5.8%  | 0.6%   | 49.2%                               | 0.6%   | 1.5%                                    | 0.8%  | 0.1%   | 0.9%  | 32.7%              |
| 4            | 406,218   | 220,183                | 1,594  | 10,874                              | 13,799  | 339  | 187,315                             | 1,422  | 1,760                                   | 1,469   | 87   | 1,041   | 185,886            |
|              | 100%      | 54.2%                  | 0.4%   | 2.7%                                | 3.4%  | 0.1%   | 46.1%                               | 0.4%   | 0.4%                                    | 0.4%  | 0.0%   | 0.3%  | 45.8%              |
| 5            | 412,091   | 175,229                | 1,317  | 15,876                              | 53,806  | 918  | 95,947                              | 1,065  | 1,647                                   | 2,794   | 175  | 1,362   | 236,568            |
|              | 100%      | 42.5%                  | 0.3%   | 3.9%                                | 13.1%   | 0.2%   | 23.3%                               | 0.3%   | 0.4%                                    | 0.7%  | 0.0%   | 0.3%  | 57.4%              |
| COUNTY TOTAL | 2,156,300 | 1,175,787              | 10,179   | 122,906                             | 145,959   | 5,761  | 835,625                             | 8,653  | 19,159                                  | 12,889  | 1,268  | 11,343  | 980,556            |
|              | 100%      | 54.5%                  | 0.5%   | 5.7%                                | 6.8%  | 0.3%   | 38.8%                               | 0.4%   | 0.9%                                    | 0.6%  | 0.1%   | 0.5%  | 45.5%              |

Table 4. Citizen Voting Age Population - (CVAP) 2015-2019 5-year American Community Survey (ACS)

| District     | CVAP Total | CVAP Not Hispanic or Latino | CVAP Not Hispanic or Latino: American Indian or Alaska Native Alone | CVAP Not Hispanic or Latino: Asian Alone | CVAP Not Hispanic or Latino: Black or African American Alone | CVAP Not Hispanic or Latino: Other Pacific Islander Alone | CVAP Not Hispanic or Latino: White Alone | CVAP Not Hispanic or Latino: American Indian or Alaska Native and White | CVAP Not Hispanic or Latino: Asian and White | CVAP Not Hispanic or Latino: Black or African American and White | CVAP Not Hispanic or Latino: American Indian or Alaska Native and Black or African American | CVAP Not Hispanic or Latino: Remainder of Two or More Race Responses | CVAP Hispanic or Latino |
|--------------|------------|-----------------------------|---|--|--|---|--|---|--|--|---|--|-------------------------|
| 1            | 323,735    | 225,321                     | 1,128   | 29,496                                   | 21,323   | 955   | 164,154                                  | 1,850   | 2,905  | 1,196  | 220   | 1,638  | 98,545                  |
|              | 100%       | 69.6%                       | 0.3%  | 9.1%                                     | 6.6%   | 0.3%  | 50.7%                                    | 0.6%  | 0.9%   | 0.4%   | 0.1%  | 0.5%   | 30.4%                   |
| 2            | 305,657    | 149,253                     | 1,038   | 21,570                                   | 19,919   | 743   | 100,692                                  | 966   | 1,661  | 967  | 98  | 1,229  | 156,553                 |
|              | 100%       | 48.8%                       | 0.3%  | 7.1%                                     | 6.5%   | 0.2%  | 32.9%                                    | 0.3%  | 0.5%   | 0.3%   | 0.0%  | 0.4%   | 51.2%                   |
| 3            | 329,234    | 237,962                     | 3,354   | 23,894                                   | 20,628   | 1,859   | 178,992                                  | 1,708   | 2,800  | 1,767  | 399   | 2,107  | 91,367                  |
|              | 100%       | 72.3%                       | 1.0%  | 7.3%                                     | 6.3%   | 0.6%  | 54.4%                                    | 0.5%  | 0.9%   | 0.5%   | 0.1%  | 0.6%   | 27.8%                   |
| 4            | 316,150    | 195,012                     | 1,250   | 8,745                                    | 10,689   | 243   | 169,989                                  | 1,246   | 732  | 704  | 72  | 781  | 121,108                 |
|              | 100%       | 61.7%                       | 0.4%  | 2.8%                                     | 3.4%   | 0.1%  | 53.8%                                    | 0.4%  | 0.2%   | 0.2%   | 0.0%  | 0.2%   | 38.3%                   |
| 5            | 281,922    | 136,934                     | 980   | 12,697                                   | 39,200   | 601   | 78,910                                   | 836   | 961  | 1,533  | 175   | 692  | 144,670                 |
|              | 100%       | 48.6%                       | 0.3%  | 4.5%                                     | 13.9%  | 0.2%  | 28.0%                                    | 0.3%  | 0.3%   | 0.5%   | 0.1%  | 0.2%   | 51.3%                   |
| COUNTY TOTAL | 1,556,698  | 944,482                     | 7,750   | 96,402                                   | 111,759  | 4,401   | 692,737                                  | 6,606   | 9,059  | 6,167  | 964   | 6,447  | 612,243                 |
|              | 100%       | 60.7%                       | 0.5%  | 6.2%                                     | 7.2%   | 0.3%  | 44.5%                                    | 0.4%  | 0.6%   | 0.4%   | 0.1%  | 0.4%   | 39.3%                   |

**Riverside County  
 Supervisorial District Summary**

**Table 5. DOJ Tabulation: Citizen Population (CVAP) 2015-2019 5-year American Community Survey (ACS)**

| District            | Total          | Not Hispanic or Latino:          |                           |                               |
|---------------------|----------------|----------------------------------|---------------------------|-------------------------------|
|                     |                | American Indian or Alaska Native | Black or African American | Not Hispanic or Latino: Asian |
| 1                   | 77,314         | 3,791                            | 29,796                    | 43,727                        |
|                     | 100%           | 4.9%                             | 38.5%                     | 56.6%                         |
| 2                   | 58,887         | 2,379                            | 26,236                    | 30,272                        |
|                     | 100%           | 4.0%                             | 44.6%                     | 51.4%                         |
| 3                   | 76,121         | 7,264                            | 30,948                    | 37,909                        |
|                     | 100%           | 9.5%                             | 40.7%                     | 49.8%                         |
| 4                   | 30,918         | 3,016                            | 15,268                    | 12,634                        |
|                     | 100%           | 9.8%                             | 49.4%                     | 40.9%                         |
| 5                   | 76,505         | 2,382                            | 56,600                    | 17,523                        |
|                     | 100%           | 3.1%                             | 74.0%                     | 22.9%                         |
| <b>COUNTY TOTAL</b> | <b>319,745</b> | <b>18,832</b>                    | <b>158,848</b>            | <b>142,065</b>                |
|                     | 100%           | 5.9%                             | 49.7%                     | 44.4%                         |

**Table 6. DOJ Tabulation: Citizen Voting Age Population (CVAP) 2015-2019 5-year American Community Survey (ACS)**

| District            | DOJ CVAP Total | DOJ CVAP Not Hispanic or Latino: |                           |  |
|---------------------|----------------|----------------------------------|---------------------------|--|
|                     |                | American Indian or Alaska Native | Black or African American | DOJ CVAP Not Hispanic or Latino: Asian |
| 1                   | 57,898         | 2,978                            | 22,519                    | 32,401                                 |
|                     | 100%           | 3.9%                             | 29.1%                     | 41.9%                                  |
| 2                   | 46,121         | 2,004                            | 20,886                    | 23,231                                 |
|                     | 100%           | 3.4%                             | 35.5%                     | 39.5%                                  |
| 3                   | 54,151         | 5,062                            | 22,395                    | 26,694                                 |
|                     | 100%           | 6.6%                             | 29.4%                     | 35.1%                                  |
| 4                   | 23,366         | 2,496                            | 11,393                    | 9,477                                  |
|                     | 100%           | 8.1%                             | 36.8%                     | 30.7%                                  |
| 5                   | 56,207         | 1,816                            | 40,733                    | 13,658                                 |
|                     | 100%           | 2.4%                             | 53.2%                     | 17.9%                                  |
| <b>COUNTY TOTAL</b> | <b>237,743</b> | <b>14,356</b>                    | <b>117,926</b>            | <b>105,461</b>                         |
|                     | 100%           | 4.5%                             | 36.9%                     | 33.0%                                  |

Source: Statewide Database 2015-2019 Citizen Voting Age Population, adjusted to reflect reallocated incarcerated persons, on 2020 Census Blocks. The original data source for the Citizen Voting Age Population (CVAP) is the American Community Survey (ACS). The ACS is an ongoing survey by the U.S. Census Bureau sent to approximately 250,000 households each month. The ACS estimates used to develop these data were collected from January 1, 2015 to December 31, 2019 utilizing the 2010 Census block groups, which were disaggregated to the 2020 Census blocks by the Statewide Database.

Because this is a special tabulation of data and not part of the standard data products shown on the Census Bureau's data.census.gov website, these estimates are rounded. Therefore, individual categories may not exactly add to the total.

For example, the sum of each of the race groups for non-Hispanics may not be the same as the estimate given for non-Hispanics. These estimates will

[For more information about CVAP products, visit https://www.census.gov/programs-surveys/decennial-census/about/voting-rights/cvap.html](https://www.census.gov/programs-surveys/decennial-census/about/voting-rights/cvap.html)  
[https://www2.census.gov/programs-surveys/decennial/rdo/technical-documentation/special-tabulation/CVAP\\_2015-2019\\_ACS\\_documentation.pdf](https://www2.census.gov/programs-surveys/decennial/rdo/technical-documentation/special-tabulation/CVAP_2015-2019_ACS_documentation.pdf)