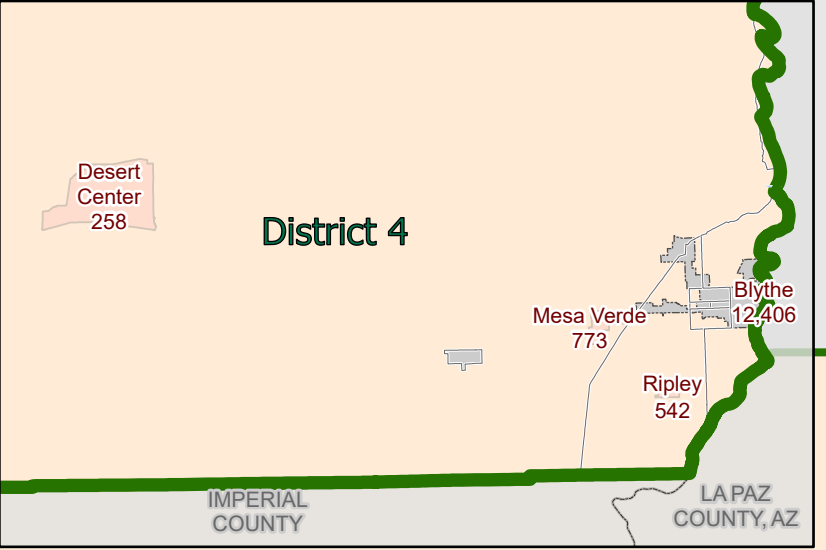
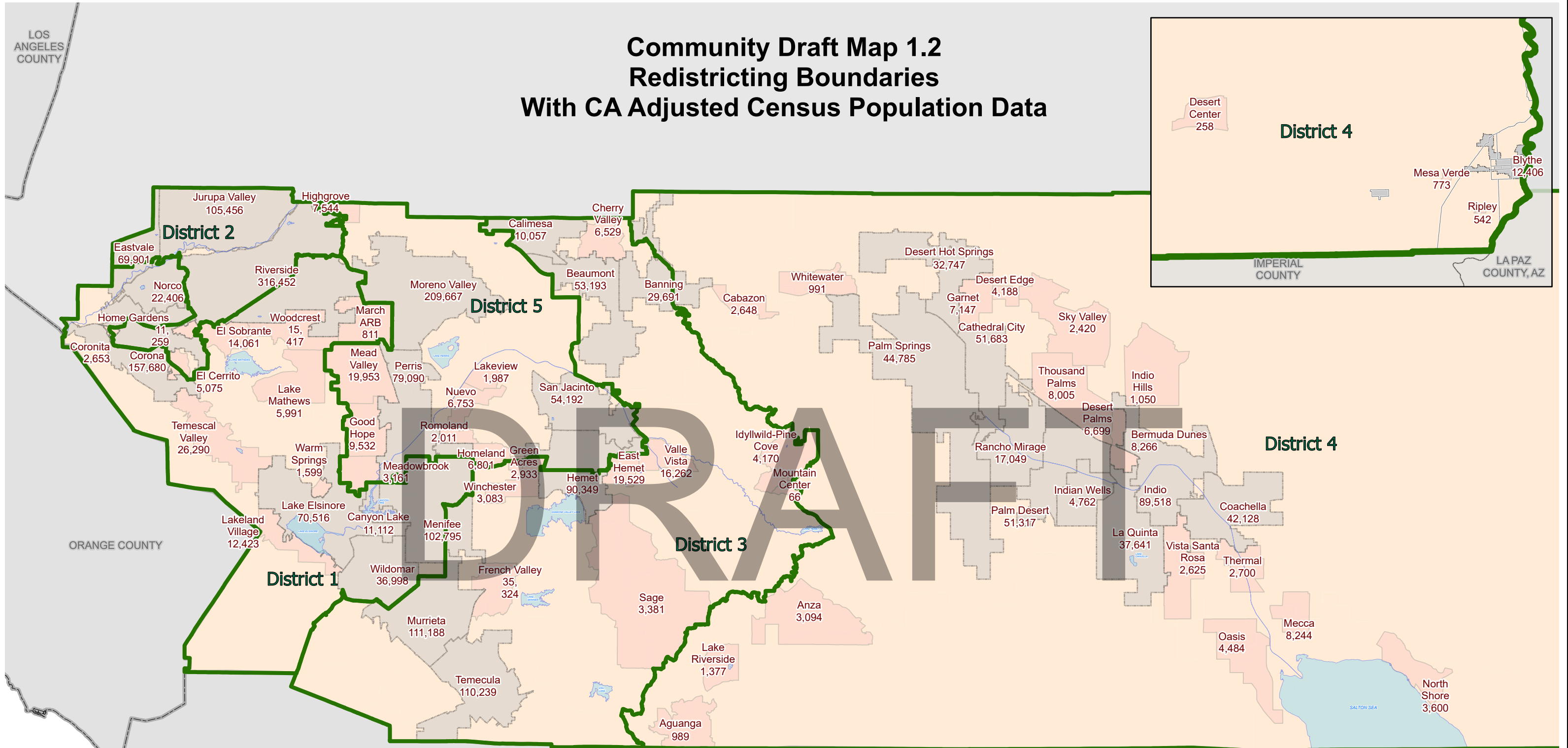
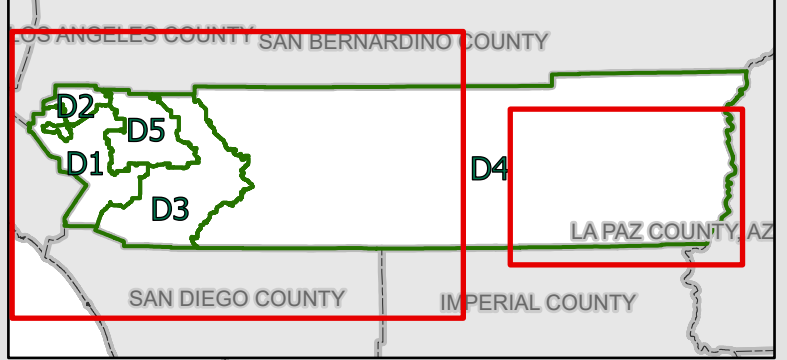


# Community Draft Map 1.2 Redistricting Boundaries With CA Adjusted Census Population Data



- Cities
- Census Designated Places
- Census Tracts
- Community Draft Map 1.2 Redistricting Boundary

District	Population 2020	Target Population	Variance from 2020 Target	Change Need to Reach Target
1	482,253	483,488	-0.3%	1,235
2	483,958	483,488	0.1%	-470
3	485,054	483,488	0.3%	-1,566
4	482,220	483,488	-0.3%	1,268
5	483,953	483,488	0.1%	-465



Riverside County  
 Supervisorial District Summary

**California Adjusted 2020 US Census Public Law File 94-171**

**Table 1. California Adjusted 2020 Census Total Population by Race/Ethnicity**

District	Total Population	Hispanic	White	Black	American Indian/ Alaskan Native	Asian	Hawaiian or Other Pacific Islander	Other Race	Two or more minority race
1	482,253	181,246	198,484	28,170	1,588	47,308	1,557	2,691	21,209
	100%	37.6%	41.2%	5.8%	0.3%	9.8%	0.3%	0.6%	4.4%
2	483,958	297,842	102,714	25,138	1,632	40,101	1,321	2,530	12,680
	100%	61.5%	21.2%	5.2%	0.3%	8.3%	0.3%	0.5%	2.6%
3	485,054	160,419	221,933	26,894	3,695	42,409	1,614	2,555	25,535
	100%	33.1%	45.8%	5.5%	0.8%	8.7%	0.3%	0.5%	5.3%
4	482,220	257,889	179,181	12,868	3,180	14,900	454	2,221	11,527
	100%	53.5%	37.2%	2.7%	0.7%	3.1%	0.1%	0.5%	2.4%
5	483,953	303,933	86,417	53,458	1,864	20,100	1,828	2,577	13,776
	100%	62.8%	17.9%	11.0%	0.4%	4.2%	0.4%	0.5%	2.8%
COUNTY TOTAL	2,417,438	1,201,329	788,729	146,528	11,959	164,818	6,774	12,574	84,727
	100%	49.7%	32.6%	6.1%	0.5%	6.8%	0.3%	0.5%	3.5%

**Table 2. California Adjusted 2020 Census Total Population by Race/Ethnicity Over the Age of 18**

District	Total Population (Over 18)	Hispanic (Over 18)	White (Over 18)	Black (Over 18)	American Indian/ Alaskan Native (Over 18)	Asian (Over 18)	Hawaiian or Other Pacific Islander (Over 18)	Other Race (Over 18)	Two or more minority race (Over 18)
1	367,905	125,618	162,959	22,531	1,271	38,395	1,235	1,930	13,966
	100%	34.1%	44.3%	6.1%	0.3%	10.4%	0.3%	0.5%	3.8%
2	362,818	209,921	87,652	20,114	1,375	32,458	977	1,782	8,539
	100%	57.9%	24.2%	5.5%	0.4%	8.9%	0.3%	0.5%	2.4%
3	361,032	107,570	178,174	20,448	2,670	33,691	1,257	1,763	15,459
	100%	29.8%	49.4%	5.7%	0.7%	9.3%	0.3%	0.5%	4.3%
4	380,072	179,275	165,225	10,258	2,419	12,673	332	1,575	8,315
	100%	47.2%	43.5%	2.7%	0.6%	3.3%	0.1%	0.4%	2.2%
5	350,934	207,321	73,270	39,816	1,383	16,858	1,372	1,712	9,202
	100%	59.1%	20.9%	11.3%	0.4%	4.8%	0.4%	0.5%	2.6%
COUNTY TOTAL	1,822,761	829,705	667,280	113,167	9,118	134,075	5,173	8,762	55,481
	100%	45.5%	36.6%	6.2%	0.5%	7.4%	0.3%	0.5%	3.0%

**CA Adjusted 2020 Census Difference from 2021 Target Supervisorial District Population of 483,488**

District	Number	Percent	Percent Spread (Largest - Smallest)
1	1,235	0.26%	
2	-470	-0.10%	
3	-1,566	-0.32%	
4	1,268	0.26%	
5	-465	-0.10%	

Source: California Statewide Database Public Law (P.L.) 94-171 and US Census Bureau Website, enacted by Congress in December 1975, requires the Census Bureau to provide states the opportunity to identify the small area geography for which they need data in order to conduct legislative redistricting.

For more information about Public Law (P.L.) 94-171: <https://www.census.gov/programs-surveys/decennial-census/about/rdo/summary-files.html>

Riverside County  
 Supervisorial District Summary

California Adjusted Citizen Voting Age Population 2020 US Special Tabulation From the 2015-2019 5-Year American Community Survey (ACS)

Table 3. Citizen Population - (CVAP) 2015-2019 5-year American Community Survey (ACS)

District	Total	Not Hispanic or Latino: American Indian or Alaska Native Alone	Not Hispanic or Latino: American Black or African American Alone	Not Hispanic or Latino: Asian Alone	Not Hispanic or Latino: American Black or African American Alone	Not Hispanic or Latino: Hawaiian or Other Pacific Islander Alone	Not Hispanic or Latino: White Alone	Not Hispanic or Latino: American Indian or Alaska Native and White	Not Hispanic or Latino: Asian and White	Not Hispanic or Latino: American Black or African American and White	Not Hispanic or Latino: American Indian or Alaska Native and Black or African American	Not Hispanic or Latino: Remainder of Two or More Race Responses	Hispanic or Latino
1	448,581	291,058	1,470	36,933	27,531	1,259	209,821	2,388	5,514	3,011	245	2,567	157,647
	100%	64.9%	0.3%	8.2%	6.1%	0.3%	46.8%	0.5%	1.2%	0.7%	0.1%	0.6%	35.1%
2	424,895	176,678	1,158	28,174	23,656	688	113,905	1,154	3,378	1,834	131	2,199	248,391
	100%	41.6%	0.3%	6.6%	5.6%	0.2%	26.8%	0.3%	0.8%	0.4%	0.0%	0.5%	58.5%
3	455,201	308,119	3,328	30,683	26,139	2,547	227,063	2,528	6,830	3,698	630	4,135	147,262
	100%	67.7%	0.7%	6.7%	5.7%	0.6%	49.9%	0.6%	1.5%	0.8%	0.1%	0.9%	32.4%
4	415,532	224,703	2,906	11,240	14,827	349	188,889	1,518	1,790	1,552	87	1,080	190,688
	100%	54.1%	0.7%	2.7%	3.6%	0.1%	45.5%	0.4%	0.4%	0.4%	0.0%	0.3%	45.9%
5	412,091	175,229	1,317	15,876	53,806	918	95,947	1,065	1,647	2,794	175	1,362	236,568
	100%	42.5%	0.3%	3.9%	13.1%	0.2%	23.3%	0.3%	0.4%	0.7%	0.0%	0.3%	57.4%
COUNTY TOTAL	2,156,300	1,175,787	10,179	122,906	145,959	5,761	835,625	8,653	19,159	12,889	1,268	11,343	980,556
	100%	54.5%	0.5%	5.7%	6.8%	0.3%	38.8%	0.4%	0.9%	0.6%	0.1%	0.5%	45.5%

Table 4. Citizen Voting Age Population - (CVAP) 2015-2019 5-year American Community Survey (ACS)

District	CVAP Total	CVAP Not Hispanic or Latino: American Indian or Alaska Native Alone	CVAP Not Hispanic or Latino: American Black or African American Alone	CVAP Not Hispanic or Latino: Asian Alone	CVAP Not Hispanic or Latino: American Black or African American Alone	CVAP Not Hispanic or Latino: Hawaiian or Other Pacific Islander Alone	CVAP Not Hispanic or Latino: White Alone	CVAP Not Hispanic or Latino: American Indian or Alaska Native and White	CVAP Not Hispanic or Latino: Asian and White	CVAP Not Hispanic or Latino: American Black or African American and White	CVAP Not Hispanic or Latino: American Indian or Alaska Native and Black or African American	CVAP Not Hispanic or Latino: Remainder of Two or More Race Responses	CVAP Hispanic or Latino
1	327,859	229,410	1,154	29,053	21,864	1,056	168,216	1,873	2,876	1,156	220	1,578	98,642
	100%	70.0%	0.4%	8.9%	6.7%	0.3%	51.3%	0.6%	0.9%	0.4%	0.1%	0.5%	30.1%
2	301,533	145,164	1,012	22,013	19,378	642	96,630	943	1,690	1,007	98	1,289	156,456
	100%	48.1%	0.3%	7.3%	6.4%	0.2%	32.0%	0.3%	0.6%	0.3%	0.0%	0.4%	51.9%
3	322,820	234,503	2,402	23,640	19,772	1,849	177,754	1,645	2,804	1,736	399	2,071	88,393
	100%	72.6%	0.7%	7.3%	6.1%	0.6%	55.1%	0.5%	0.9%	0.5%	0.1%	0.6%	27.4%
4	322,564	198,471	2,202	8,999	11,545	253	171,227	1,309	728	735	72	817	124,082
	100%	61.5%	0.7%	2.8%	3.6%	0.1%	53.1%	0.4%	0.2%	0.2%	0.0%	0.3%	38.5%
5	281,922	136,934	980	12,697	39,200	601	78,910	836	961	1,533	175	692	144,670
	100%	48.6%	0.3%	4.5%	13.9%	0.2%	28.0%	0.3%	0.3%	0.5%	0.1%	0.2%	51.3%
COUNTY TOTAL	1,556,698	944,482	7,750	96,402	111,759	4,401	692,737	6,606	9,059	6,167	964	6,447	612,243
	100%	60.7%	0.5%	6.2%	7.2%	0.3%	44.5%	0.4%	0.6%	0.4%	0.1%	0.4%	39.3%

**Riverside County  
 Supervisorial District Summary**

**Table 5. DOJ Tabulation: Citizen Population (CVAP) 2015-2019 5-year American Community Survey (ACS)**

District	Total	Not Hispanic or Latino:		
		American Indian or Alaska Native	Black or African American	Not Hispanic or Latino: Asian
1	76,847	3,858	30,542	42,447
	100%	5.0%	39.7%	55.2%
2	59,354	2,312	25,490	31,552
	100%	3.9%	42.9%	53.2%
3	73,206	5,856	29,837	37,513
	100%	8.0%	40.8%	51.2%
4	33,833	4,424	16,379	13,030
	100%	13.1%	48.4%	38.5%
5	76,505	2,382	56,600	17,523
	100%	3.1%	74.0%	22.9%
<b>COUNTY TOTAL</b>	<b>319,745</b>	<b>18,832</b>	<b>158,848</b>	<b>142,065</b>
	100%	5.9%	49.7%	44.4%

**Table 6. DOJ Tabulation: Citizen Voting Age Population (CVAP) 2015-2019 5-year American Community Survey (ACS)**

District	DOJ CVAP Total	DOJ CVAP Not Hispanic or Latino:		
		American Indian or Alaska Native	Black or African American	DOJ CVAP Not Hispanic or Latino: Asian
1	57,976	3,027	23,020	31,929
	100%	3.9%	30.0%	41.5%
2	46,043	1,955	20,385	23,703
	100%	3.3%	34.3%	39.9%
3	51,999	4,047	21,508	26,444
	100%	5.5%	29.4%	36.1%
4	25,518	3,511	12,280	9,727
	100%	10.4%	36.3%	28.8%
5	56,207	1,816	40,733	13,658
	100%	2.4%	53.2%	17.9%
<b>COUNTY TOTAL</b>	<b>237,743</b>	<b>14,356</b>	<b>117,926</b>	<b>105,461</b>
	100%	4.5%	36.9%	33.0%

Source: Statewide Database 2015-2019 Citizen Voting Age Population, adjusted to reflect reallocated incarcerated persons, on 2020 Census Blocks. The original data source for the Citizen Voting Age Population (CVAP) is the American Community Survey (ACS). The ACS is an ongoing survey by the U.S. Census Bureau sent to approximately 250,000 households each month. The ACS estimates used to develop these data were collected from January 1, 2015 to December 31, 2019 utilizing the 2010 Census block groups, which were disaggregated to the 2020 Census blocks by the Statewide Database.

Because this is a special tabulation of data and not part of the standard data products shown on the Census Bureau's data.census.gov website, these estimates are rounded. Therefore, individual categories may not exactly add to the total.

For example, the sum of each of the race groups for non-Hispanics may not be the same as the estimate given for non-Hispanics. These estimates will

[For more information about CVAP products, visit https://www.census.gov/programs-surveys/decennial-census/about/voting-rights/cvap.html](https://www.census.gov/programs-surveys/decennial-census/about/voting-rights/cvap.html)  
[https://www2.census.gov/programs-surveys/decennial/rdo/technical-documentation/special-tabulation/CVAP\\_2015-2019\\_ACS\\_documentation.pdf](https://www2.census.gov/programs-surveys/decennial/rdo/technical-documentation/special-tabulation/CVAP_2015-2019_ACS_documentation.pdf)